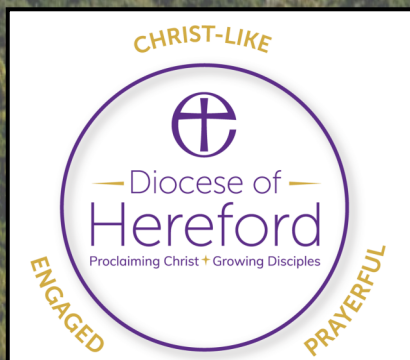


The United Benefice of Cradley with Mathon and Storridge Seeks a new Rector

What are you
looking for?



Come and
see...

Contents

Page

1	Cover
2	Contents
3	Introduction from Bishop Richard
4	What we offer
5	What we are looking for
6	Our Benefice
7	Cradley Parish Profile
11	Mathon Parish Profile
14	Storrige Parish Profile
16	Current pattern of services
17	Cradley School
18	Our Rectory
19	Local context
20	Local amenities
21	Person specification
22	References and local amenities
23	Back cover



Introduction from Bishop Richard

Thank you for your interest in this post and in the Diocese of Hereford. As you will have seen from the benefice profile, this is a group of parishes with great potential. A strong team is already in place, and the congregations are in good heart—ready for a new pastor to lead them forward in mission and ministry.

The Diocese of Hereford is the smallest in the Church of England, and we believe that our parishes are at the heart of diocesan life. We are committed to supporting local ministry and enabling ministers to thrive. Being a small diocese means we place a high value on relationships. While we offer proper structures—such as Ministerial Development Review (MDR), and access to confidential wellbeing support including accompaniment and counselling—we also know that informal support is just as important. The accessibility of senior staff and a rich diocesan social life contribute significantly to the sense of community here. I also have access to a discretionary fund to provide emergency financial support when needed.



Our benefices are diverse—socially, economically, and theologically. We are fortunate not to experience the kind of aggressive partisanship found in some other places. On *Living in Love and Faith* (LLF), I have always affirmed that clergy will be supported to act according to their conscience, within the proper order of the Church.

We have a diocesan strategy, but it is intentionally light-touch. Our purpose is clear: to proclaim Christ and grow disciples. We shape our churches around three core values—Christlikeness, prayerfulness, and engagement. These values have been explored in diocesan-wide ‘Years of Prayer, Discipleship, and Engagement,’ but their local expression is left to the discernment of each parish. In areas where there is limited relational connection—particularly with young people—we are working alongside the national church on creative outreach initiatives. Thanks to our total return accounting policy, we are also able to fund innovative local projects.

I hope you will find the Diocese of Hereford to be a happy, supportive, and enriching place in which to live and minister. I look forward to receiving your application.

We can offer:

Warm, welcoming and friendly church communities

An Area of Outstanding Natural Beauty

Three parishes that support one another and PCCs that are keen to secure the future of our churches

Excellent local schools, a doctors' surgery, village shops and a motor services garage

Easy access to local towns and cities

An attractive 4 bedroom rectory





We are looking for a Rector who is:

Keen to reach out and engage with the wider community and help everyone to grow in faith.

Energetic, forward-looking, flexible imaginative and visionary.

A leader and a good team member, prepared to innovate whilst taking the existing congregation with them

A good shepherd, keen to go out and engage with our communities and work closely with the village school

Keen to build upon the traditions of our parishes

A good communicator, able to engage with all age groups, particularly younger generations; adults as well as children.

Will lead us in developing our pastoral care across the benefice

Our Benefice

Our benefice consists of three parishes. Cradley is the largest and offers a range of worship. Mathon and Storridge prefer more traditional BCP services. All our churches provide a warm welcome and are looking for ways we can secure their futures with growing congregations. Our churches are closely situated with just 2.6 miles between them.

We meet annually as a benefice to review our progress, identify our plans and challenges and look for ways we can support each other.



There are common challenges and circumstances that are unique to each parish. The church wardens meet together regularly.

The Rector is supported by Jane Macfarlane, our Licenced Local Lay Minister and local retired clergy. Some members of our congregations also contribute to lay-led services. A team in Cradley work together with the Rector to plan and deliver the monthly

Church4All service. The benefice also has a Visiting Group, a Prayer Chain and a Bible Study House Group. Each church has its own website. These, the monthly Three Villages Newsletter and each parish's Facebook page keep parishioners informed about church and community events.

It is hoped that the next Rector will embrace initiatives that are faith based and will engage with a broad range of people who are at different stages in their journey of faith.

We hope to develop the use of technology in all our churches to give the opportunity to those who are not able to attend church to take part in our worship.

Our current priorities include:

- Building our church congregations from all generations.
 - ◇ Engaging more with younger generations, adults as well as children.
 - ◇ Welcoming and engaging with newcomers to the villages.
 - ◇ Encouraging more community involvement and events in our churches, being the beating heart of our communities.
- Planning the succession of laity to secure the leadership of our churches.
- Developing our pastoral care, reaching out to newcomers, the sick, the isolated and the lonely across our scattered rural communities.
- Updating and enhancing our communications and our on-line presence.
- Help us to develop a vision that draws the three parishes together in their mission and outreach.



The Parish Church of St. James the Great in Cradley

Cradley has a very active church with a weekly average of around 30 worshippers for our regular services. Our annual festivals are well supported, swelling our congregation for Christmas, Easter and Remembrance. We love it when our church is heaving with young families and children. For our Christingle service, there were 208 people, including 73 children (and 2 dogs!). The church is open every day and attracts many visitors and tourists. Cradley Church electoral roll presently stands at 63 out of a population of around 1700. Our energetic PCC works tirelessly to maintain and develop the worshipping life of the church and its contribution to the local community. In 2024—2025 we had three baptisms, four weddings and three funerals and one burial of ashes. Two further funerals were held at crematoria. We enjoy close links with our Church of England Primary School.



In addition to our four PCC sub-committees (for Worship, Outreach & Events, Fabric and Churchyard) we have a House Bible Study Group and a small, active Mothers' Union. Church members regularly engage with members of other denominations at meetings of Cradley's "Christians Together" group, and occasional joint services are held with Cradley Chapel (Countess of Huntingdon's Connexion). We regularly collect food and raise money for Ledbury Food Bank and also actively support other local and international charities at Harvest and Christmas and during Lent.

The church offers a variety of worshipping opportunities varying each Sunday from 'Holy Communion to our Lay-led service and our monthly 'Church4All' service on the first Sunday of the month. We are hoping that the new Rector will help us to review and develop the current pattern of worship and orders of service. We try to serve a broad range of worshipping tastes, respecting the different traditions. Our 'Church4All' service is a team effort with an enthusiastic team of around a dozen people meeting mid-month with the Rector to plan the service around a theme. A lot of flexibility and creativity is built into this service which strives to engage people of all generations with Jimmy's Band, our worship band named after St. James, providing the music.

The church has a strong musical tradition with a robed choir as well as 'Jimmy's Band'. We have an electric and an acoustic piano and a lovely Nicholson organ.





Cradley churchyard occupies a special place in the hearts of the community, and is used for many village events. It is open for burials and cremations and an additional Remembrance Garden is planned. We have a dedicated community mowing team of over 30 members. Cradley School “Community Champions” have planted wild daffodil bulbs, built a wildlife “hotel” and help maintain a flowerbed, and the Cradley Wild group have planted an area by the lych-gate. This year, in addition to our annual Pet Service, we held our May Ecology-themed Church4All service in the churchyard. We have also been engaging with our community to promote a greater awareness of ecological issues through Newsletter articles and we are delighted that we have recently achieved a Silver Eco Church Award.



Cradley is an eclectic community, from parishioners whose families have been in Cradley for several generations, to more recent arrivals. Some work in our rural farms and industries and many commute further afield to Malvern, Ledbury, Bromyard, Worcester and Hereford. Others are able to commute to Cheltenham, Gloucester and Birmingham.



The timber-framed 16th Century Village Hall stands in the south-east corner of the churchyard; owned by the Diocese, it is leased out to the Village Hall Management Committee. It was originally a Church Ale House and later the old Boys School until the early twentieth century and has been restored to its former glory. It contains a hall area and is available for wedding receptions, functions, meetings and parties. It also houses the village Heritage and Resource Centre, provides a reprographics design and printing facility for the community and is home to the Heritage group, who are the custodians of the extensive village archives.



Regular musical events and organ recitals are held in the church, for example our annual St. David's Day Concert featuring Shelley Fairplay, a professional Welsh Harp player, and the Worcester Male Voice Choir.

We have accomplished bell-ringing and handbell groups from the three parishes and provide training for new bell-ringers using computerised simulation. We are visited by ringing groups locally and from all over the country. The church clock is a First World War memorial, and maintained by Cradley and Storridge Parish Council.



The church is a large and beautiful 12th Century Grade 2 * Listed building with Anglo-Saxon features, significantly restored to a high standard in the 1860s. Of particular interest to historians and visitors are the Anglo-Saxon stone, tower ringing-chamber, fine stained-glass windows, long medieval chest and unusual 18th Century font. We have had recent visits from the Three Choirs Festival, the Housman Society and, in October this year Ledbury U3A, all interested in the heritage of our church and community. The building is lovingly looked-after and well-maintained; our recent Triennial Inspection described the church as 'in excellent condition'. In 2020 the tower and north aisle were restored, and a new kitchen installed; we have recently raised £100k to build a toilet, and are currently developing plans to raise another £40k for a new audio-visual system to enhance our worship and enable us to live-stream services in a professional way. In addition to musical events, our fundraising activities include Sunday cream teas during the summer and our biennial "Open Gardens" event.

The church has strong links with the local community: we run several joint events with our Village Hall Committee such as our biennial Village Fete; families enjoy our successful "Stir-up Sunday" pudding-making afternoon each November, and we have introduced a bread-making afternoon at this year's Harvest Festival week-end.



Cradley Church Finances



We are fortunate to have a very supportive population in Cradley. The Parishioners support the Church in a number of ways. A team of volunteers mow the South Church Lawn and a group of dedicated gardeners look after the flower beds and trees/hedges, and harvest hay from churchyard grass for use by local smallholders. The Parish Council supports the Church by giving an annual grant toward the maintenance of the Church Yard Burial Ground. The Church has 21 regular givers using the PGS scheme and 10 giving by monthly standing order. We also have annual gifts from a number of residents and also from the Duchy of Cornwall.

Our church finances are very sound. We operate the yellow envelope scheme for collections at services and have a Contactless payment station within the Church. As a registered charity we are able to claim Gift Aid on all donations and annually receive a substantial sum. We have recently raised nearly £100k to enable us to build and install a new toilet which will be finished by the Autumn of 2025. We regularly stage fund raising events which produce around £8000 annually. Our parish offer in 2024 was £33,000, which has been increasing year on year, however we held it at the same value for 2025 in order to ensure we completed the funding for the Church Toilet. We are pledged to raise it again this financial year and hope to continue to do this into the future.



The Parish Church of St John the Baptist in Mathon

The Worshipping Community

Our regular Sunday congregation (averaging sixteen people) predominantly uses the Book of Common Prayer and hymns from Common Praise. A resident organist is supported by others for weekly services. During the past five years there have been two weddings, fourteen funerals and one baptism in Mathon church and one service of confirmation. Our typical pattern of worship for each month includes Parish Holy Communion, Mattins and Evensong. The parish has actively embraced lay-led worship for the past two decades in order to ensure that it is possible to provide a service in the church every Sunday.



Key 'milestone services' in the year are well supported by those in the village and beyond, for example, the annual carols by candlelight service typically attracts over one hundred people and has long featured 'Men of Mathon' who sing the opening carol. In addition to Sunday services, Evening prayer (said) is live-streamed every Wednesday at 6.30 p.m. Prior to Covid this was an 'in church' service, but during the 'covid years' it was found there was a significantly larger number of participants when this was live-streamed.

It is an aspiration of Mathon Church to ensure that all people are welcome and to explore and consider ways to extend and enhance ministry to try to make it relevant on a weekly basis, not just at major church festivals and events, while not significantly changing the current orders of service or style or worship offered. In recent years some pews from the back of the church have been removed to enable more room for people to gather after church services, for meetings and community occasions; also, with the help of a grant from the Historic Churches Trust, an up-to-date toilet has been installed in the churchyard.



Mindful of the rural nature of the parish Rogation Sunday (typically an outdoor service that visits farms, garden, brook and village green) and harvest festival are particularly relevant annual services. In many years the parish enjoyed a summer open air service, often in a local garden. Our church is used for social events during the year. In past years these have included, talks, summer gatherings (treasure hunts, afternoon tea, celebration of Royal events such as HRH The Queen's Platinum Jubilee), coffee mornings (often with other stalls) for fund-raising, and as the centre of village 'open garden' events. The Mathon PCC is committed to promoting the church as a focal point of village life.



Pre covid, by far the largest attendance at lent talks (which for the three years prior to covid were also interactively live-streamed) were when they were on subjects with wider interest (for example, faith in .. [the law, science, etc.] or 'the history of our faith') when the parish hall was frequently full. Mathon PCC hoped that such wider appeal events could be re-established and used as a 'route to faith' for those who maybe inspired (or feel calling) to make explorations in that direction.

A Strong Sense of Local Community

There is a strong sense of 'local community' within our village and this is reflected in the sporting and social opportunities available. The Parish Hall is centrally sited within our village and is used as a venue for meetings and social events. For example, the weekly coffee mornings, keep fit classes, the annual Christmas Fair, Lent talks and other 'one off' village events. It is also available for hire for 'private events'. Sporting facilities include a cricket pitch in the grounds of Mathon Court, used by the very active West Malvern Cricket Club (<https://westmalvern.play-cricket.com/home>); Mathon, Cradley and Storridge Tennis Club, with three hard courts, two with floodlights and a clubhouse (<https://clubspark.lta.org.uk/MCSTennis>) and a private fishing club.

Serving our church there is an active (though small) group of flower arrangers who provide floral displays in the church (as part of a rota). Some parishioners also volunteer to assist

We are hoping to re-establish monthly singing mornings in church.

Mathon PCC believes it important that the next Rector plays an active part in the community and continues and builds upon visiting local people who would appreciate seeing a clergy-person (for example recently out of hospital, facing life changes such as unemployment, a family death, etc.) either to talk or to receive Holy Communion.



The Church Building

Mathon church is a 12th century church expanded in the 14th century and then further enhanced and developed over the years. Our church is situated in a particularly peaceful location close to the largest cluster of housing in the parish. It is a focus (along with the Parish Hall) for the community, a building for everyone, and a venue for milestones in the lives of many generations of local families. The church is open daily for private prayer and as a peaceful place for meditation or reflection. The churchyard contains graves dating back centuries, and is still a place of interment today. The building is in a generally good state of repair with well maintained churchyard. The latest quinquennial report found no areas of significant concern (beyond normal general maintenance needs).

For detailed information about the history of Mathon church see

<https://www.mathonchurch.org.uk/tour/>. This online tour can be used by visitors to the church, and others, to help discover the building's rich history and architecture. Web server logs show that the complete online tour is accessed well over 400 times a year (with some years showing even larger usage).

The Parish Church of St John the Baptist, Mathon

Mathon parish church serves this rural parish covering an area of 11.95 square kilometres on the eastern edge of Herefordshire in the lee of the Malvern Hills. The majority of the land within the parish is agricultural / woodland with 30 km of footpaths / bridleways within the parish, most of which are well maintained and used.



Social Geography of Mathon

The 2021 census records the parish population as 318 (31 of whom were under 18 year of age, and 96 over 65), with an average density of 26.62 people per square kilometre. Some farms employ workers from overseas during the summer. Of the adult population 199 identified as Christian, while 83 indicated they did not identify with any religion. The parish has a Parish Council (<https://mathonparishcouncil.co.uk/>) and the parishes of Bosbury, Coddington, Colwall, and Mathon together form the ward of Hope End, which returns one elected councillor to Herefordshire Council.

Mathon Church Organisation and Finance

The active PCC meets typically around five times a year and has no sub-committees. The parish has long aimed, as part of the wider Benefice, to 'pay its way' in terms of its parish offer. However, it is also realistic about the need to live within its means. Currently there are thirteen people who contribute by regular giving via the parish giving scheme.

Mathon church has as its patrons the Diocese of Hereford and Westminster Abbey (with previous Rectors being invited to Westminster Abbey annually, and it is understood and expected that this will continue into the future).

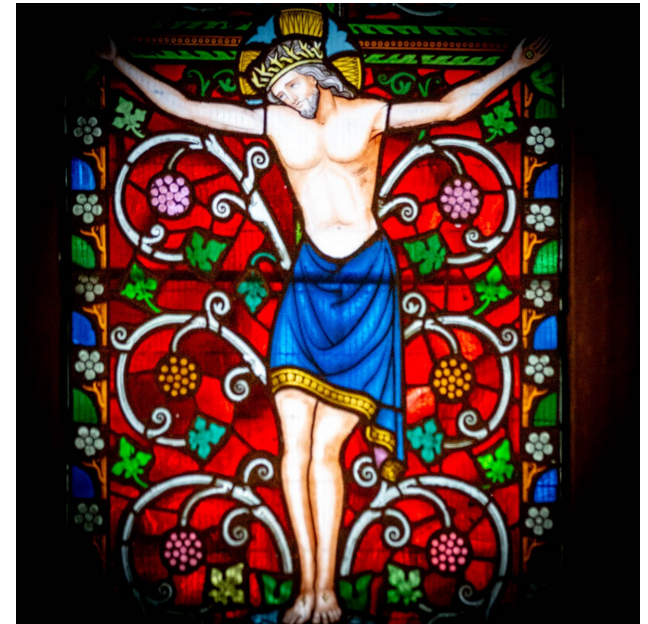
The Parish Church of St John the Evangelist in Storridge



The first church to be designed by Frederick Preedy, the notable Worcestershire architect and glass painter, St. John the Evangelist was built in the Gothic Revival style, and consecrated in 1856 as a Chapel of Ease within the large parish of Cradley. Envisaged as a memorial to his son by Rev. Charles Scott Luxmoor, Rector of Cradley from 1816 to 1854, the land was provided by his three sisters who saw the building through. Preedy's well-known stained-glass window, depicting the Crucifixion and placed over the altar, holds one's attention as a reminder of the core of our faith. In 1867, Storridge became a perpetual curacy (with vicarage) in the gift of the Rector of Cradley, until the creation of the United Benefice in 1982. The church is Grade II listed.

Storridge is a scattered rural community, mostly of farming backgrounds. There are approximately 250 on the civil electoral roll, and 22 on the church electoral roll. The church is situated alongside the A4103, Hereford to Worcester road.

Church festivals such as Harvest, Christmas and Easter, and of course funerals, are occasions when the community comes together; weekly church attendance varies from 6-12 people. We hold three Sunday services a month, one Holy Communion and two Matins, one of which is led by a member of our congregation. Our church is a member of The Prayer Book Society, and we regularly use the Book of Common Prayer for our services.



Both the church and churchyard are well-maintained: the churchyard has recently been cleared of “suspect” trees and overgrown shrubs, and paths have been re-established and levelled to improve the approach to any grave. The churchyard is open for burials to anyone who lives in, or has a direct connection to Storridge. There are usually 1-2 burials each year, and occasional weddings and baptisms are held in the church. A fortnightly rota ensures that fresh flowers are always on the altar. Local farmers have held floristry courses in the church, with themes of flowers for weddings and funerals.



Nearby is Storridge's newly-modernised Village Hall, with excellent catering facilities; it is home to many church, Benefice and community events, such as Twelfth Night suppers and, in past years, Maundy Thursday “Last Suppers”. It is also the venue for many of Storridge church's annual Literary and Music Festival events.

The Festival, founded over 10 years ago, takes place between April and September. Recent talks have included “The Prayer Book in Practice and the English Reformation”, focussing on music from the 1540s; the recently-restored church organ is often played by visiting organists, and one of last year's events, held at Cradley School, included the School choir and musicians. The Festival annually concludes with an evening of “Poetry Bring and Share.” Some speakers have already been booked for next year.

Current pattern of services

The table below shows the general pattern of services throughout the year, with occasional exceptions such as Remembrance Sunday and Mothering Sunday.

	Cradley	Mathon	Storridge	Live streamed Benefice
First Sunday	10:45am Church4All all age worship with Jimmy's Band	9:30 am BCP Parish Communion.	No service	9:30am Morning Service (Lay led)
Second Sunday	10:45am Live streamed Family Communion	6:00pm Evensong	9:30am Mattins	10:45am Live streamed Family Communion
Third Sunday	10:45 Morning Service (Lay led)	9:30am Mattins (Lay led)	9:30am BCP Holy Communion	11:am Live streamed service from the Rectory
Fourth Sunday	10:45am Parish Communion	9:30am Shorter Mattins	9:30am Mattins (Lay led)	6pm Live streamed service of Evening Prayer
Fifth Sunday	Benefice Holy Communion at each church in turn			
Weekly	Wednesdays 10am Holy Communion (said)			
	Live Streamed Evening Prayer each Wednesday at 6:30pm from the Rectory			
Annually	Benefice Rogation Sunday service in Mathon			

Current Benefice Events

- 5th Sunday services at each church in turn,
- Lent Course,
- Lent lunches (held churches, village halls and homes),
- Rogation service (Mathon),
- Remembrance Day service with British Legion (Cradley)
- Annual Benefice morning engaging discussion with the wider community.
- The Mothers' Union is nominally a Benefice group.

Cradley Church of England Primary School

Our village Church of England primary school lies in a lovely location with modern buildings and facilities. The school enjoys close links with the village church.

What do we offer?

Cradley CofE VA Primary School has a strong Christian ethos led by a committed Christian Head Teacher, borne out by its exemplary SIAMS report as of 2024. We are a welcoming school where all the children feel safe and are inspired by their teachers and volunteers who lead a wide range of after school clubs: gardening, Community Champions, choir, to name but a few. We also have both a breakfast club and after school club for those who need it, providing a welcome facility for our families.

We have an excellent Nursery on the premises which runs holiday clubs that are always over-subscribed. The village has a Teeny Tots group that frequently links with school nursery activities.

The children are proud of their school and are always willing to share their opinions about their achievements. They are a joy to be with, lively, interested and up for a challenge. The school regularly attends church for a range of events and takes an interest in the building's history and churchyard, having built a 'bug sanctuary' with after school club volunteers and a garden of Remembrance. A small group of volunteers from the church lead "Open the Book" mornings where children role play with great enjoyment.

What are we looking for?

We expect our incumbent to be visible and approachable in school, to take an active role and to motivate both staff and children, but most of all to enjoy being with our children. We look forward to inspiring Collective Worship encompassing children and adults, as parents are welcome to attend. As ex-officio Foundation Governor, the role ensures that the Christian ethos is maintained and that links between Church, School and the wider community are strengthened. As the school is the catalyst for young families attending church, this is an area that continues to need developing with the help and support of our incumbent. We currently make every effort to encourage more active church going and participation in our services encompassing all age groups, and this is still on-going as one would expect.

We welcome you!



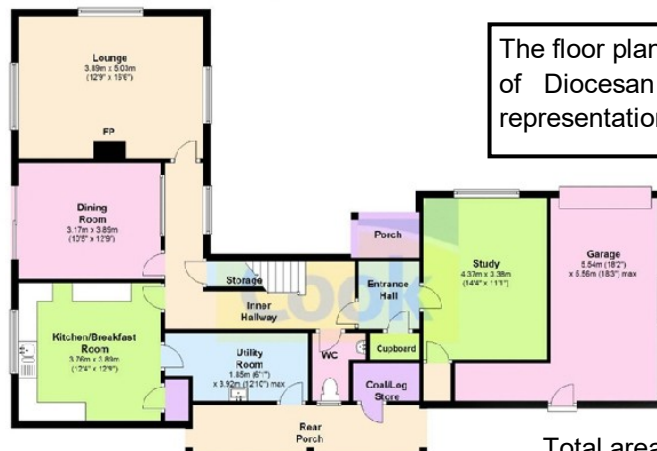
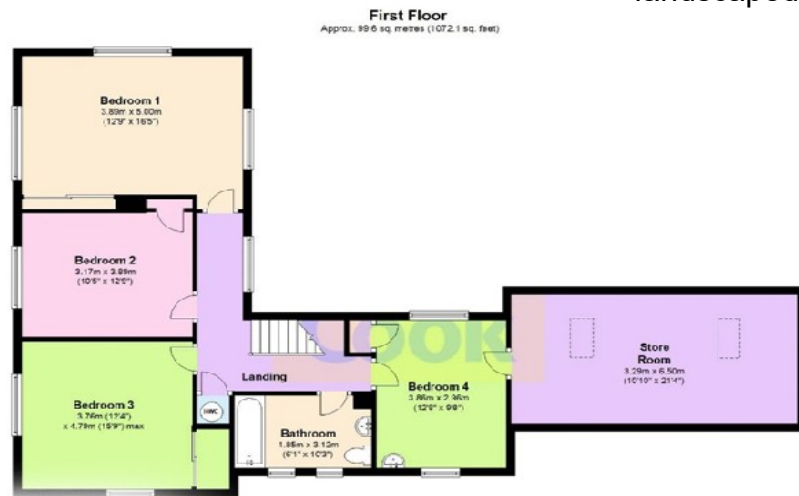
Cradley Rectory

- your new home

Our Rectory, a spacious four bedroom family house is situated in a quiet and attractive part of Cradley, conveniently close to Cradley church.

It has a good-sized lounge, separate dining room, kitchen, utility room and downstairs toilet. The spacious study has a very pleasant outlook over the garden. Upstairs there are four bedrooms and a family bathroom.

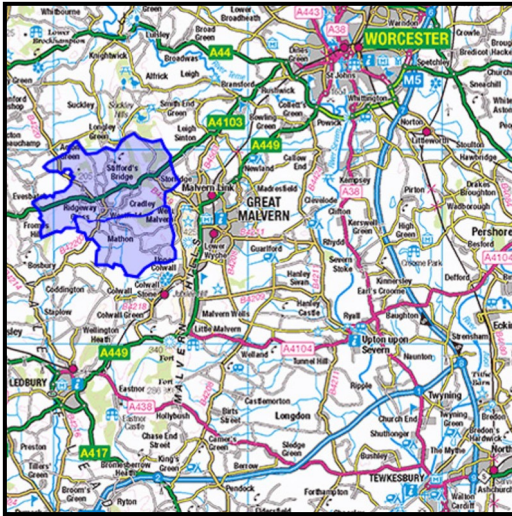
Externally, the driveway and garage provide ample space for several vehicles. The landscaped garden, which envelops the property, features a patio area and mature borders.



The floor plan provided is typical of a number of Diocesan properties and is a fair representation of the layout of Cradley Rectory.

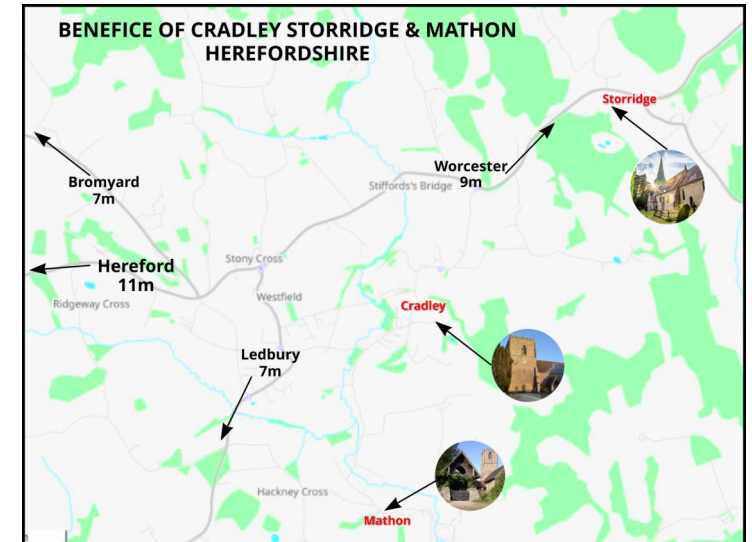
Total area approx. 222.00 sq. metres (2399.3 sq. feet)





Cradley, Mathon and Storridge are three villages situated close together in eastern Herefordshire in a tranquil, rural setting. They are conveniently placed for access to the major centres of Malvern, Ledbury and Bromyard and the cities of Worcester and Hereford.

Local context



Vibrant local towns and rich cultural life:

Malvern, our nearest town, with the Malvern Hills and the Malvern Theatres and Cinema staging a wide range of stage productions, concerts and films; it has town-centre shops and a large retail park.

Ledbury with its wealth of historic buildings and a wide range of independent shops, cafes and restaurants, holds an annual Poetry Festival.

Bromyard similarly has lots of timber-framed and Georgian buildings and traditional shops with the Bromyard Downs and Bringsty Common close by. It holds an annual Folk Festival.

Hereford, Gloucester and Worcester are all historic cathedral cities with shopping and cultural opportunities. They take it in turns to host the annual Three Choirs Festival.

Cheltenham is a lovely Regency spa town and cultural centre, famous with a wide variety of nationally renowned annual festivals.

Transport communications are excellent. The main A4103 between Hereford and Worcester runs through the benefice and there are mainline railway stations in nearby Malvern and Colwall with direct links to Worcester, Birmingham, London, Hereford and South Wales. Cradley also offers a popular village CofE primary school, village shop, GP surgery, local pub and British Legion club. Further and more extensive facilities, including secondary schools and colleges, are available in the neighbouring towns of Great Malvern, Ledbury and the cities of Hereford and Worcester all offering a diverse range of independent shops, supermarkets, eateries and other leisure facilities. There is a bus service between Worcester and Ledbury for six days a week which stops close to the Rectory.

Local amenities

The Village Surgery

Cradley Surgery provides primary medical services to our villages. It is based on the Westfield side of Cradley providing GP services, a pharmacy, diagnostic and screening procedures, family planning, midwifery and maternity services



The Royal British Legion Social Club serves the three villages. It opens six days a week. The club has two bars, snooker and pool tables, darts, a skittle alley and offers bar snacks and local ales. We liaise closely with the British Legion with Cradley's annual Remembrance service.

The 1st Cradley Scout Group We have our own Scout Group, currently with Beaver Scout and Cub Scout sections; there are on-going plans to re-start a Scout Troop section. The Group has its own Scout Hut close to Cradley church.



There are many small businesses located in the benefice, such as our local **Village Store** which provides a wide range of everyday items and locally-sourced produce. It is open seven days a week.

The Red Lion is situated on the A4103 Worcester to Hereford road. It has an informal and friendly atmosphere and sells a wide range of traditional ales. The menu is far from the standard pub menu, with daily specials often reflecting Mediterranean influences. Locally sourced steaks and hand-made pies are firm favourites with the friendly locals.



So, what are we looking for?

Our Person Specification

We welcome applications from men and women, including newly-qualified clergy.

Qualifications

- An ordained priest within the Church of England, or a church in communion with it, or a church whose orders recognise it.
- Satisfactory completion of Initial Ministerial Education.
- Designated at selection or Candidates' Panel as Incumbent Status (post-2009) or Stipendiary Ministry.

We seek a Rector who is:

- A good pastor, personable and approachable. Someone who is energetic, forward-looking, flexible, imaginative and visionary.
- Someone with a proven track record of engaging with the wider community, including developing pastoral care and helping others to grow in faith.
- A leader and a good team member, who is collaborative and consultative, prepared to innovate whilst taking the existing congregations with them.
- A good communicator, able to engage with all age groups, particularly younger generations; adults as well as children. Committed to working with the local school.
- Someone who recognises, respects and enforces boundaries. Able to approach difficult situations sensitively and retain healthy relationships.
- Someone who can demonstrate a good understanding of rural issues.
- Keen to develop the use of technology in furthering the mission of the church and has a good working knowledge of IT.

References

For the churches:

The Benefice website: <http://www.cradleychurch.org.uk/>
<https://www.facebook.com/cradleychurch>
https://www.mathonchurch.org.uk/index_m.php
<https://www.facebook.com/MathonChurch/>
<https://www.instagram.com/mathon.church/>
Hereford Diocese: <https://www.hereford.anglican.org/>
Cradley children talking about the church windows: <https://communitywindows.wordpress.com/2019/11/14/st-james-the-great-cradley-the-environment/>

Church addresses:

St James the Great church,
Rectory Lane
Cradley, WR13 5LH

St John the Baptist church

Mathon Road
Mathon
WR13 5PW

St John the Evangelist church,
A4103 Storridge
WR13 5ER

For the local community:

Cradley C of E Primary School: <https://www.cradleyschool.org.uk/>
Cradley Village Hall: <http://www.cradleyvillagehall.org.uk/>
Cradley Surgery: <https://www.cradleysurgery.nhs.uk/>
Village Store: https://www.facebook.com/CradleyVillageStore/?locale=en_GB
The Red Lion: <https://www.redlioncradley.co.uk/>
The Royal British Legion: https://www.facebook.com/TheRBLatCradley/?locale=en_GB
Lots of other local websites can be accessed through: <https://sites.google.com/view/cradleyorguk/>
Millbank Garage: info@all-track4x4.com
Malvern Theatres : <https://malvern-theatres.co.uk/>



